

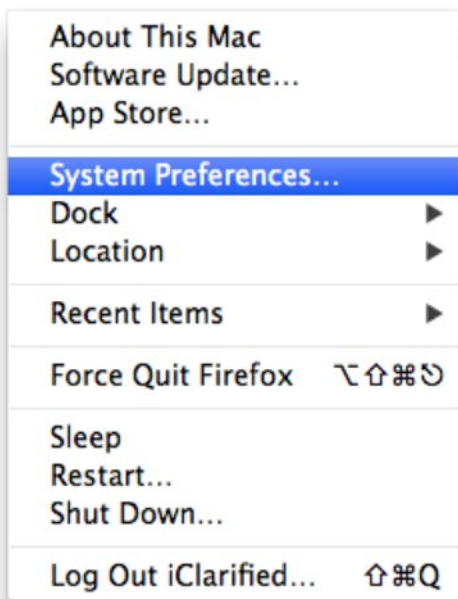
How to Find Your MAC Address in Mac OS X

These are instructions on how to find the MAC address of your ethernet or wireless networking card in Mac OS X.

USING SYSTEM PREFERENCES:

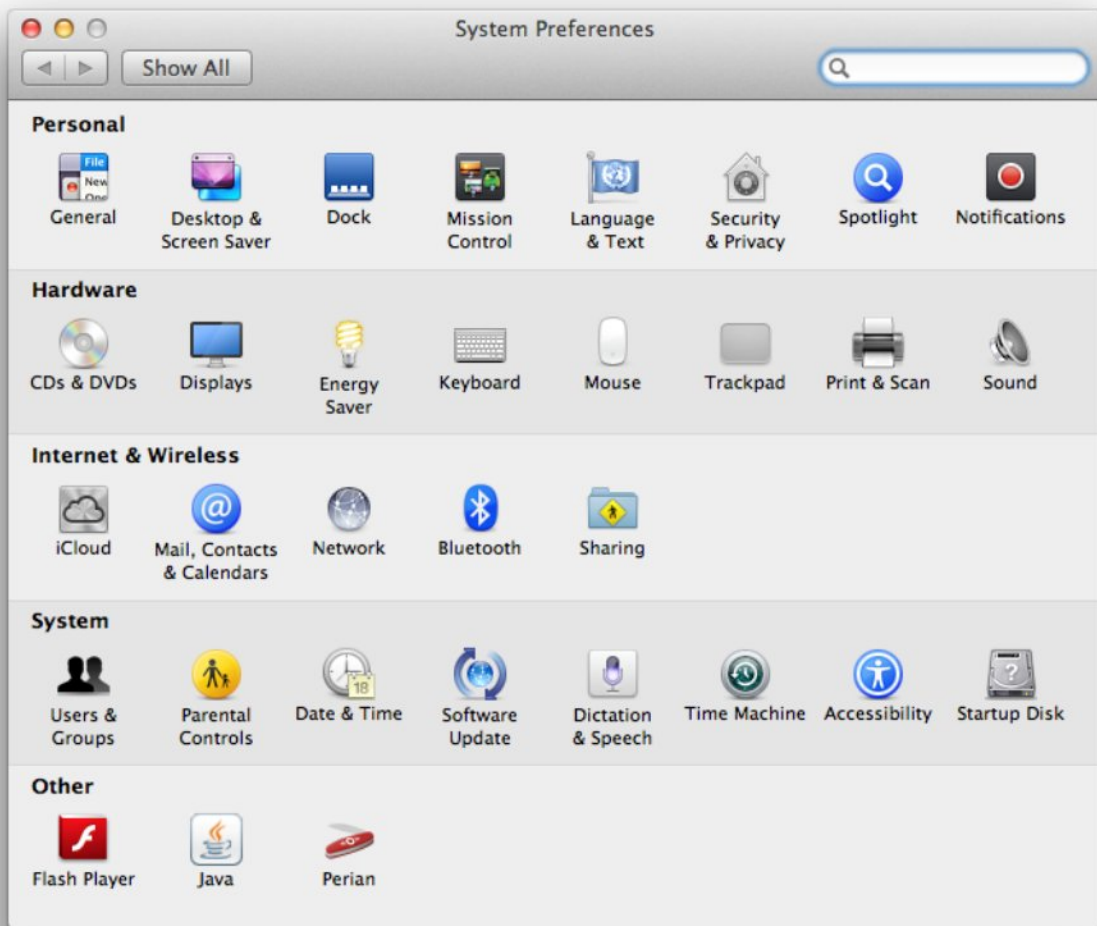
Step One

Select *System Preferences* from the Apple menu at the top left of your screen.



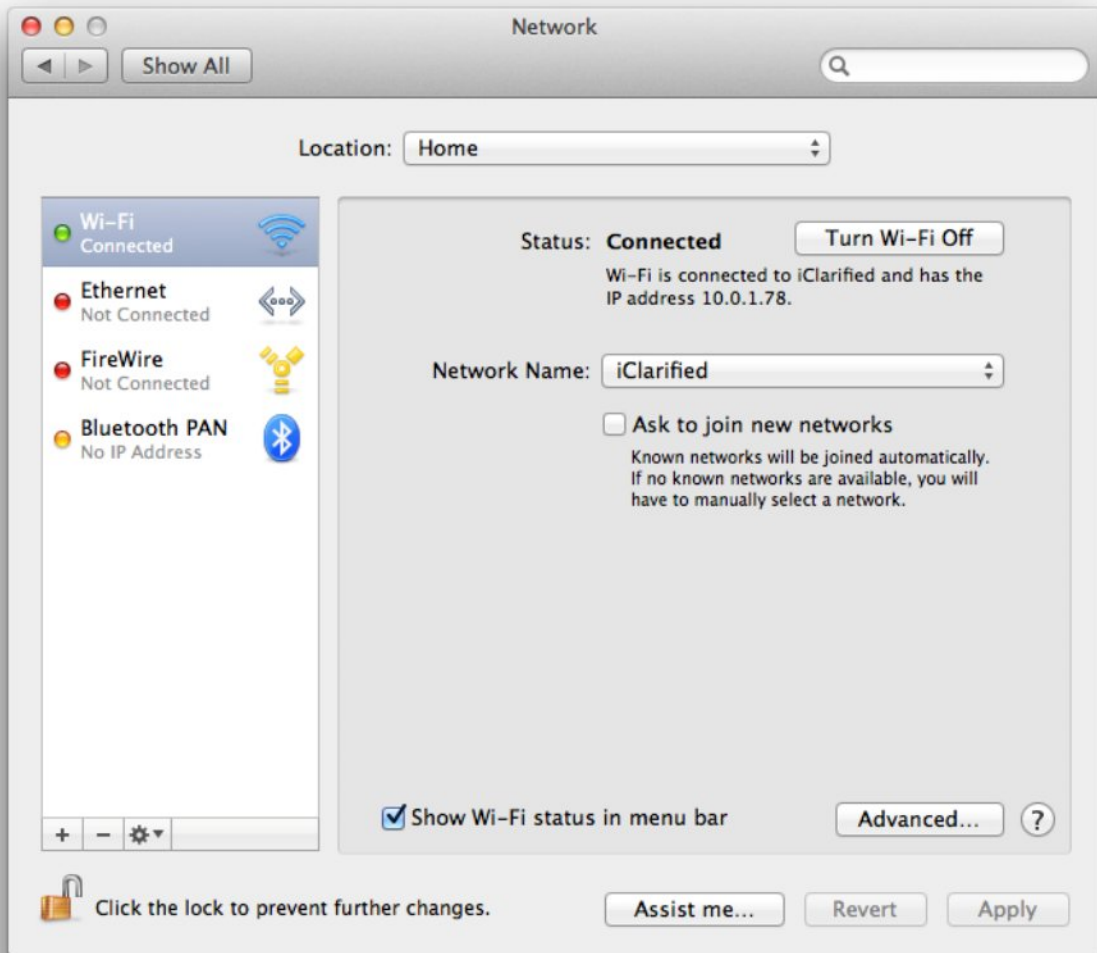
Step Two

Click *Network* from the System Preferences menu.



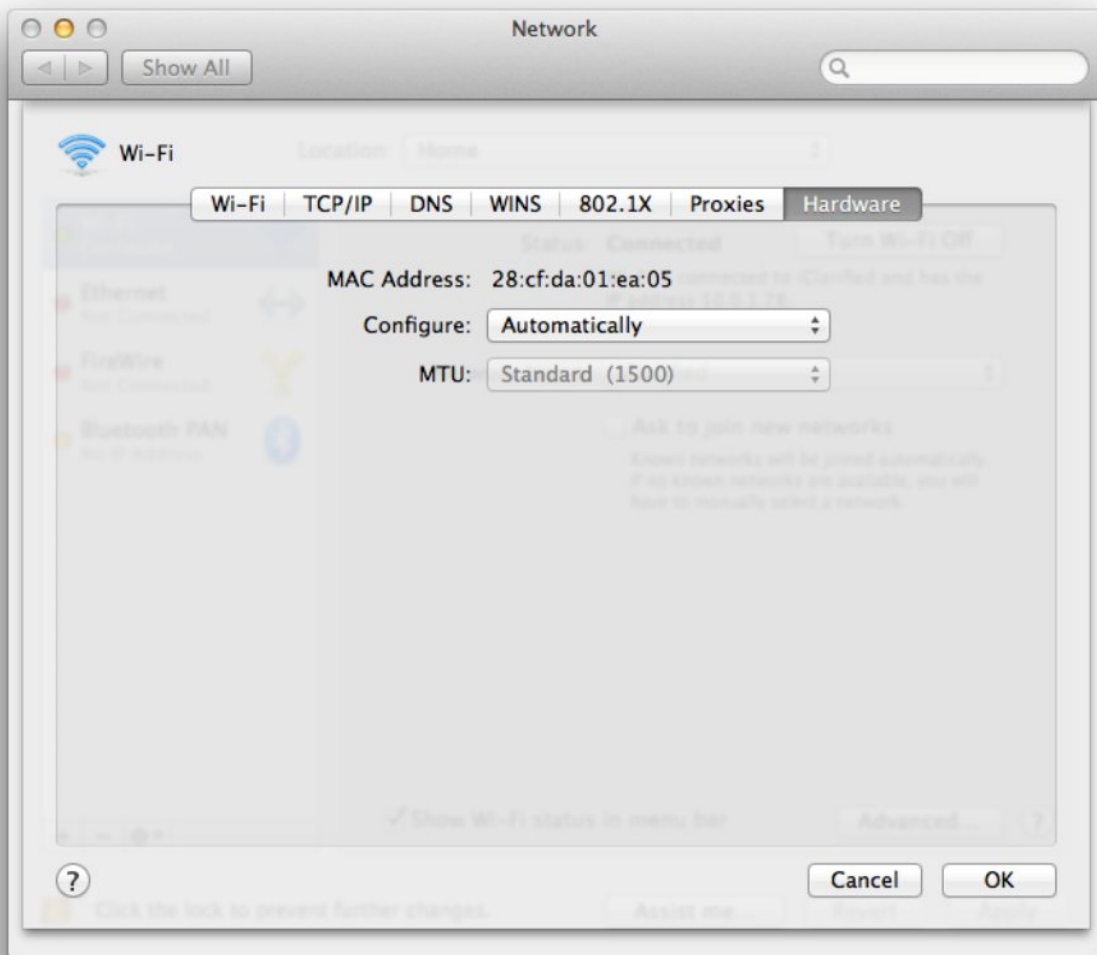
Step Three

Choose *Wi-Fi* from the list of interfaces on the left and click the *Advanced* button.



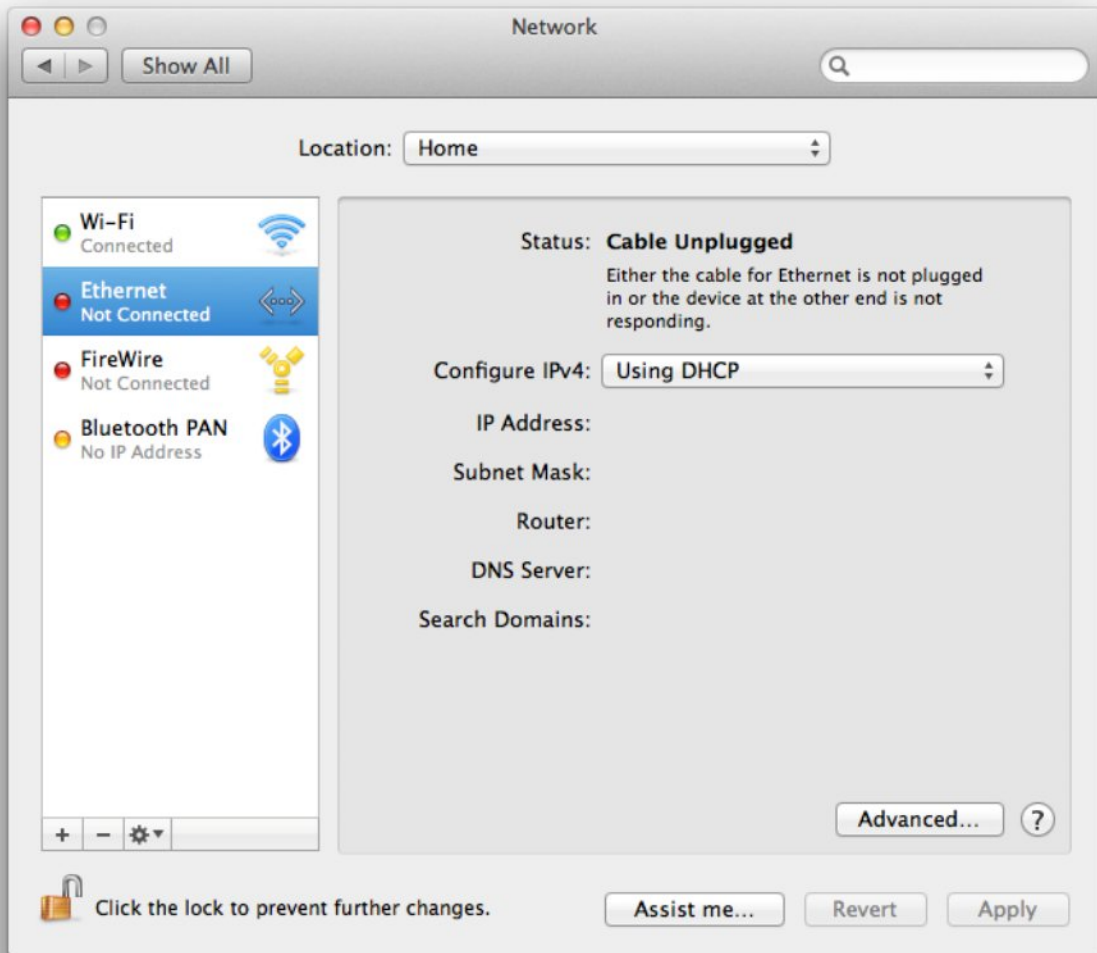
Step Four

Choose the *Hardware* tab under which you will see the MAC address of your wireless card.



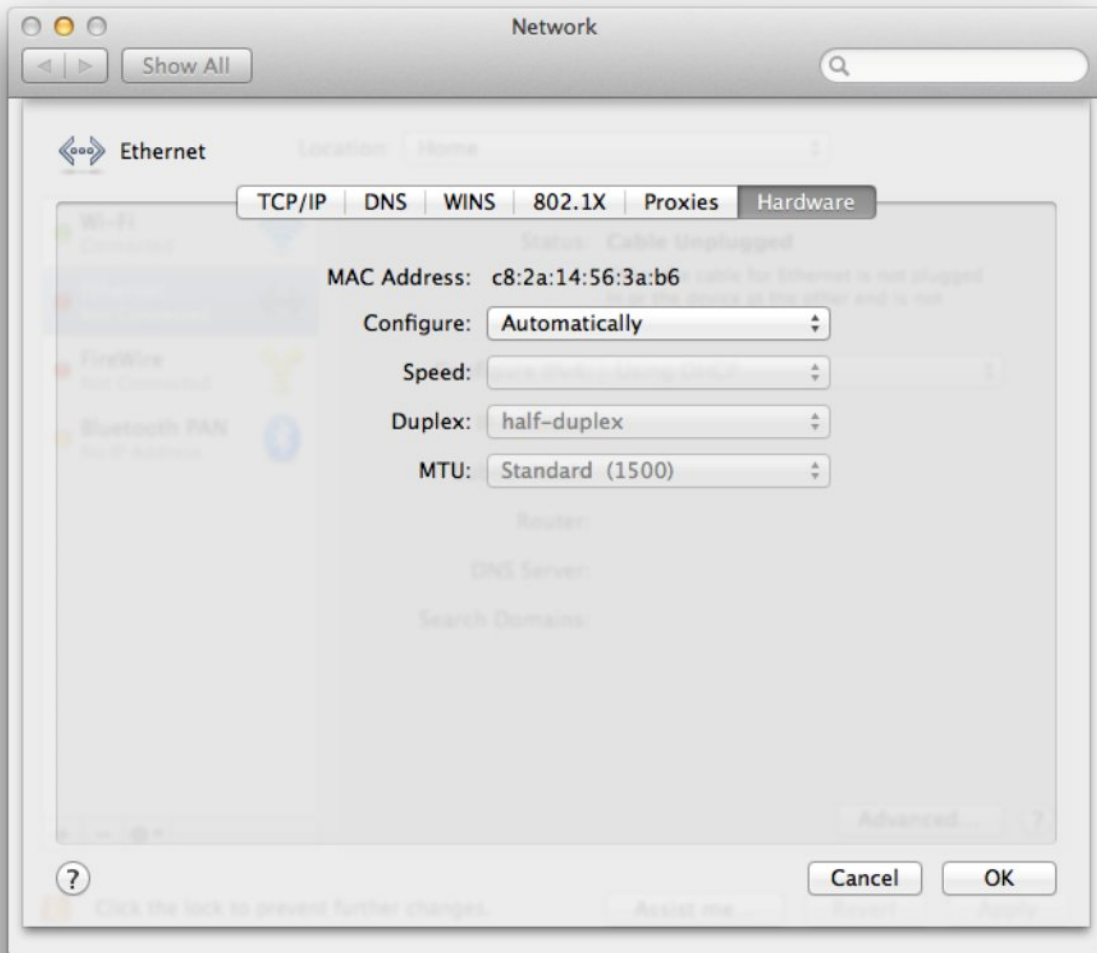
Step Five

Press *Cancel* to return to the Network menu. Choose *Ethernet* from the list of interfaces on the left and click the *Advanced* button.



Step Six

Choose the *Hardware* tab under which you will see the MAC address of your ethernet card.



USING TERMINAL

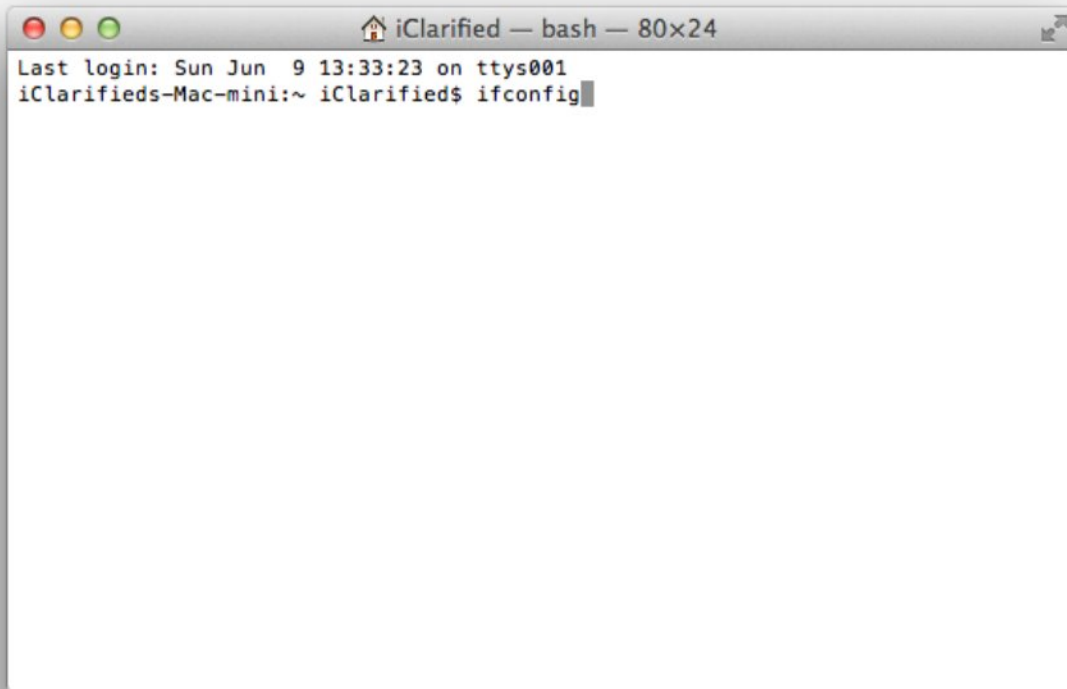
Step One

Launch *Terminal* from the Applications:Utilities folder.



Step Two

Type *ifconfig* into the Terminal window and press the Enter/Return key.

A screenshot of a macOS Terminal window. The title bar reads "iClarified — bash — 80x24". The terminal content shows the last login time as "Sun Jun 9 13:33:23 on ttys001" and the current prompt as "iClarifieds-Mac-mini:~ iClarified\$". The command "ifconfig" has been entered, and the cursor is at the end of the line.

```
iClarified — bash — 80x24
Last login: Sun Jun 9 13:33:23 on ttys001
iClarifieds-Mac-mini:~ iClarified$ ifconfig
```

Step Three

You will be shown data on all your interfaces.

On systems with both an ethernet and wireless connection, en0 will be your ethernet interface and en1 will be your wireless interface. A MAC address will be shown for both en0 and en1 and likely labelled as "ether".

On systems with just a wireless connection, en0 will be your wireless interface. The MAC address for en0 will likely be labelled as "ether".

```
iClarified — bash — 80x30
Last login: Sun Jun  9 13:33:23 on ttys001
iClarifieds-Mac-mini:~ iClarified$ ifconfig
lo0: flags=8049<UP,LOOPBACK,RUNNING,MULTICAST> mtu 16384
    options=3<RXCSUM,TXCSUM>
    inet6 fe80::1%lo0 prefixlen 64 scopeid 0x1
    inet 127.0.0.1 netmask 0xff000000
    inet6 ::1 prefixlen 128
gif0: flags=8010<POINTOPOINT,MULTICAST> mtu 1280
stf0: flags=0<> mtu 1280
en0: flags=8863<UP,BROADCAST,SMART,RUNNING,SIMPLEX,MULTICAST> mtu 1500
    options=2b<RXCSUM,TXCSUM,VLAN_HWTAGGING,TS04>
    ether c8:2a:14:56:3a:b6 Ethernet
    media: autoselect (none)
    status: inactive
en1: flags=8863<UP,BROADCAST,SMART,RUNNING,SIMPLEX,MULTICAST> mtu 1500
    ether 28:cf:da:01:ea:05 Wireless (Wi-Fi)
    inet6 fe80::2acf:daff:fe01:ea05%en1 prefixlen 64 scopeid 0x5
    inet 10.0.1.78 netmask 0xfffff00 broadcast 10.0.1.255
    media: autoselect
    status: active
p2p0: flags=8843<UP,BROADCAST,RUNNING,SIMPLEX,MULTICAST> mtu 2304
    ether 0a:cf:da:01:ea:05
    media: autoselect
    status: inactive
fw0: flags=8863<UP,BROADCAST,SMART,RUNNING,SIMPLEX,MULTICAST> mtu 4078
    lladdr c8:2a:14:ff:fe:ee:3b:7e
    media: autoselect <full-duplex>
    status: inactive
iClarifieds-Mac-mini:~ iClarified$
```